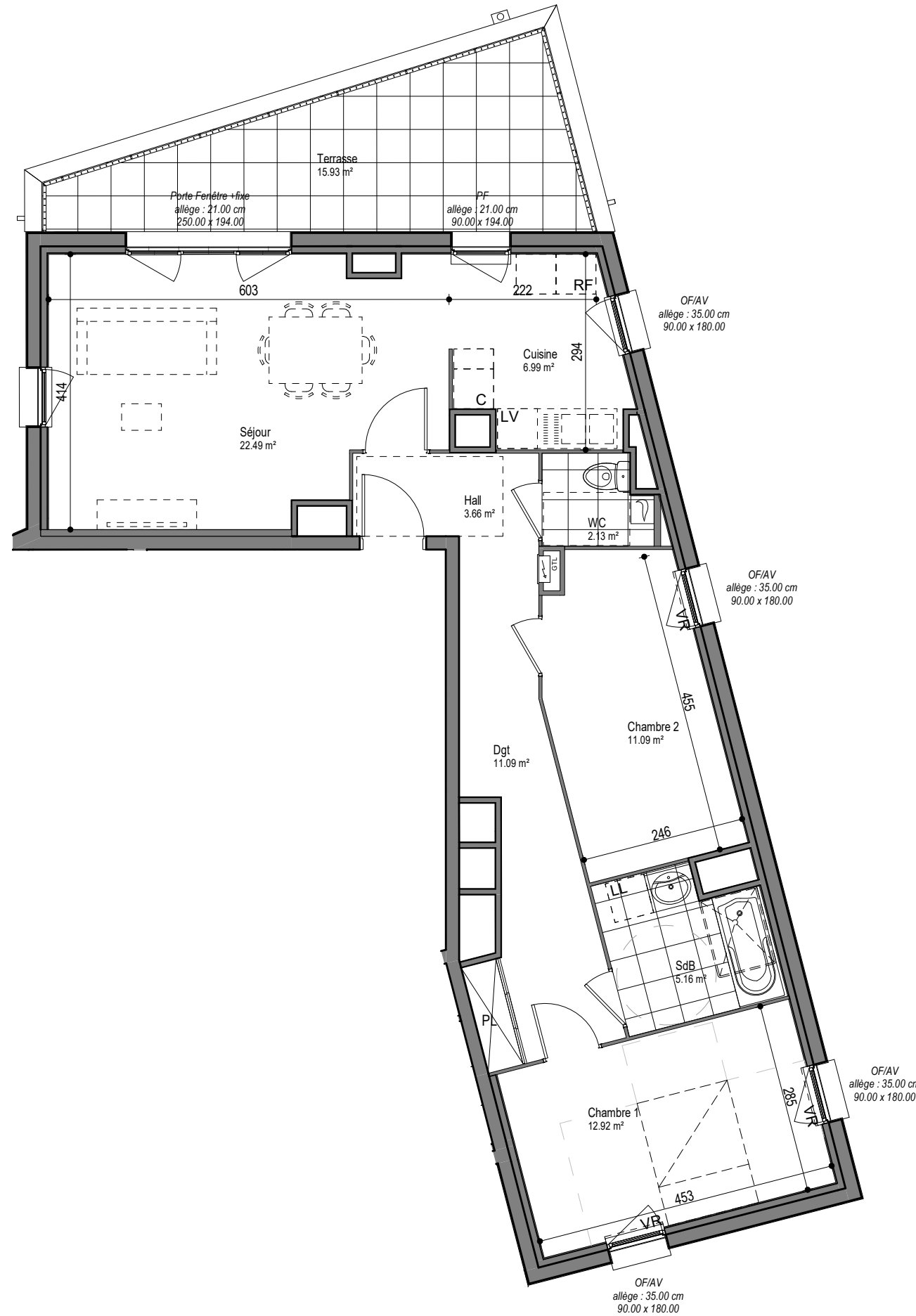




Service Commercial:

-Mail: contact-immobilier@ramery.fr

-Tél: 03.20.77.88.33

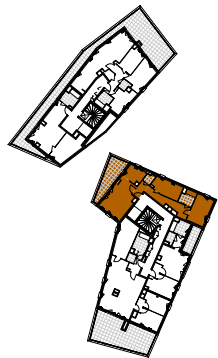


HAUBOURDIN

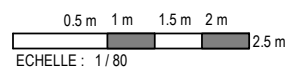
BATIMENT C

Appartement C_501

Typologie: T3



Plan d'ensemble



MAES
ARCHITECTES
URBANISTES

Agence MAES Architectes & Urbanistes
2, place Genevières - 59 000 LILLE

Niveau: R+5

Séjour	22.49 m ²
Chambre 1	12.92 m ²
Chambre 2	11.09 m ²
Dgt	11.09 m ²
Cuisine	6.99 m ²
SdB	5.16 m ²
Hall	3.66 m ²
WC	2.13 m ²

Surface habitable 75.53 m²

Terrasse 15.93 m²

Surface Utile 91.46 m²